



Beach Crest Brewing

BREW FLOORS

CASE STUDY

BY THE BREW FLOORS TEAM AND BEACHCREST BREWING

BACKGROUND

BeachCrest Brewing is craft brewery slated to open in the spring of 2019 on the Oregon Coast. Husband and wife duo, Matt and Amy met while in Denver, CO (aka the beer mecca of the US!) and got into the craft beer scene by visiting many of the local spots such as the Great Divide, Avery and New Belgium. They feel in love with many aspects of each brewery and when visiting family on the Oregon Coast would venture out to the local craft brewers but could not quite find the small and creative feel they enjoyed so much in Denver. So they set out on a dream to build their brewery on the Coast of Oregon! In this Case Study we are explore some the hardships of getting a brewery up and running, the different types of beer they plan on brewing, and why they choose to go with the Brew Floors Coating System for their flooring needs.



Beach Crest Brewing Facts

Location

Central Oregon Coast

Year Founded

2018

Founding Team Size

4

Facility Size

2200 sq.ft



QUESTIONS FOR THE FOUNDERS

WHAT GOT YOU INTO BREWING?

My wife and I met in Denver, CO, which as you probably know is a beer mecca, the home to over 100 breweries, the AHA, Brewers Association, GABF, etc. We got into craft beer going to amazing breweries like Great Divide, Avery, New Belgium, etc. but found we really loved the small, personal feeling taprooms like De Steeg, Goldspot, Odd 13, and similar others. At the same time, we were visiting family in Oregon and spending time on the Oregon Coast. We always wanted a small and creative (read Denver style!) brewery to visit on the Coast. There was Rogue, Pelican and Fort George (among others) of course, who we love, but nothing with the same feel that we loved, so years ago, we developed this dream of opening our own! Do coincide with this long term dream, I purchased a homebrew kit and set out on learning the process, reading John Palmer, Charlie Papzian, Randy Mosher and the like, listening to podcasts and eventually interning at a small local brewery and then taking the Colorado Boy brewing immersion course by Tom Hennessey all the while brewing multiple batches a week after work, sharing beer with friends and coworkers and absorbing as much brewing knowledge as I could.

WHERE IS YOUR BREWERY BASED? WHAT IS THE LOCAL BREWING SCENE LIKE?

We are in Gleneden Beach on the Oregon Coast. Oregon as a state (really the entire Pacific Northwest) is another mecca of brewing, and most towns have their own brewery. We are just south of the Pelican and just north of Rogue, but our immediate local scene in Gleneden Beach and the Salishan and Lincoln Beach neighborhoods do not have a brewery, which is where we fit in.

HOW MANY PEOPLE ARE PART OF YOUR TEAM?

We have four owners. My partner Sean and I both brew, our wives Amy and Megan are more focused on the business side of things.

WHAT TYPE OF BEER ARE YOU GOING TO BE BREWING?

We want to focus on variety, creativity, and seasonality in our brewery, so the plan is to have a constantly rotating list of brews on tap. That being said, we'll focus on mainly ales (with the occasional lager) and stay away from bret/wild yeasts, at first at least. I'm a huge fan of Belgian beers, so those will always be a part of our offerings, as well as new American styles (NEIPA, brut, black IPA, kettle sours, etc.) and the occasional German or English.



The Founders

Matt, Amy, Megan, and Sean

CHALLENGES IN STARTING A BREWERY AND WHY BREWFLOORS WAS THE BEST CHOICE FOR A FLOORING SOLUTION

WHAT CHALLENGES DID YOU FACE IN THE EARLY STAGES OF BUILDING THE BREWERY?

We've had our share! Our brewery floor was coated in old linoleum, glued to the concrete slab beneath. It ended up testing positive for asbestos. We've got that taken care of though. The big hurdle, which is close to a final resolution, is that unincorporated Lincoln County (where we are) ended up having a line in their code that prevented fermentation in commercially zones areas. Fortunately the planning commission and county commissioners feel that the code is out of date and we are nearing the end of the many-month process to have the code amended and be the first brewery in unincorporated Lincoln County Oregon!

HOW DID YOU FIND BREW FLOORS?

A simple Google search. We loved that it was DIY (we're all about doing things on our own and within a budget here) and made specifically for Breweries.

HOW WAS THE PROCESS OF APPLYING THE BREW FLOORS EPOXY SYSTEM?

Easy and pretty painless. We went with the Brewfloors II system because of the amount of space we were covering. We ended up having enough product to coat but the base and top layers twice, which I'm happy about. It's looking really good. My main observation was that it was quite fume-heavy. I decided to use my respirator on the last day and that really helped. I would say that anyone applying the coating indoors should make sure there is good ventilation (we opened both doors and all windows) and use a respirator.

HOW MUCH TIME AND MONEY DID YOU SAVE?

I don't have firm numbers but I'm sure it was significant.

WOULD YOU RECOMMEND THIS PRODUCT TO FELLOW BREWERS AND BREWING ENTHUSIASTS?

I would! We haven't had the time to really put it through the paces, so I'm hoping in a year it still looks this good. Fingers crossed!

BEFORE



AFTER

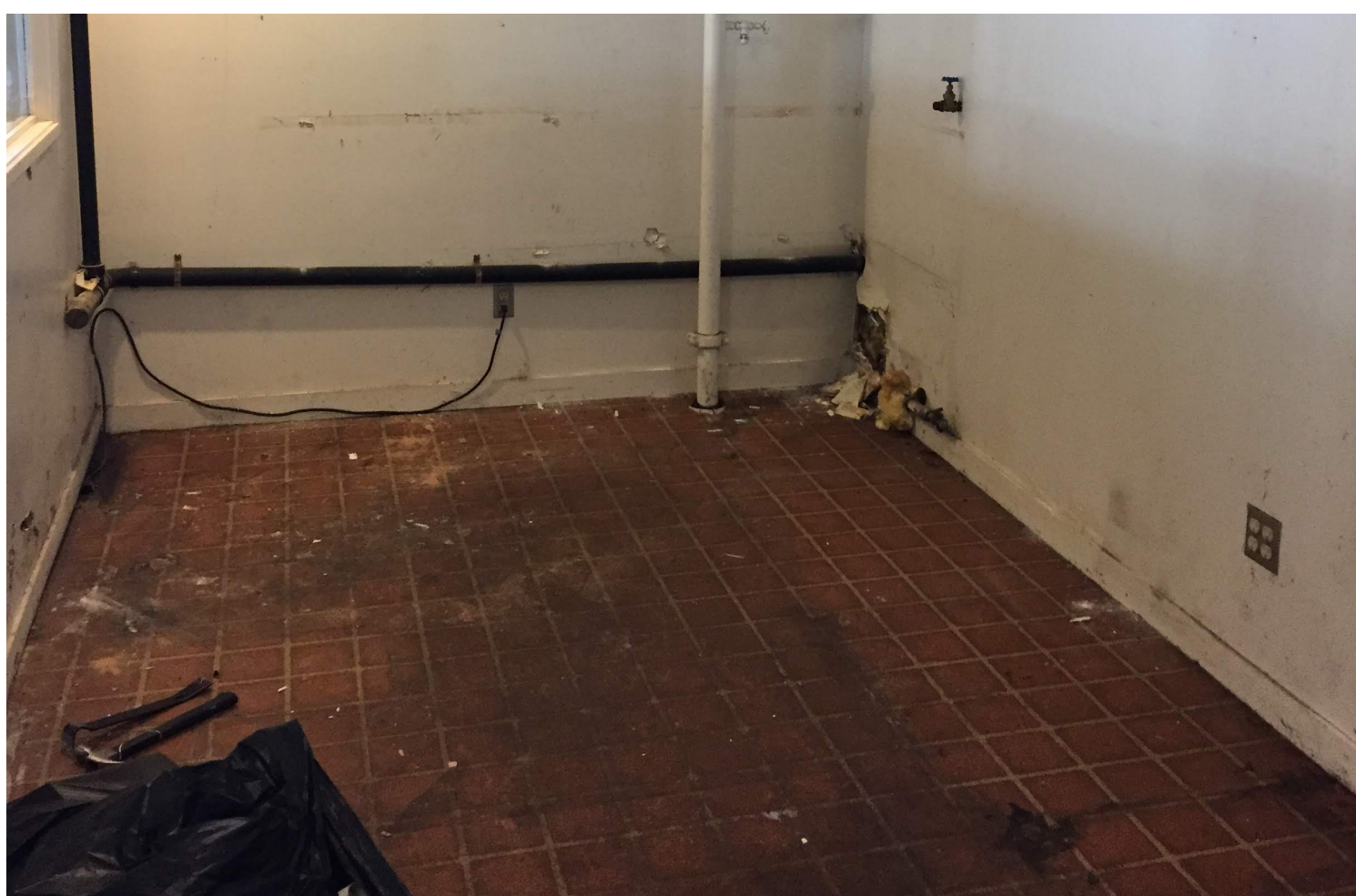
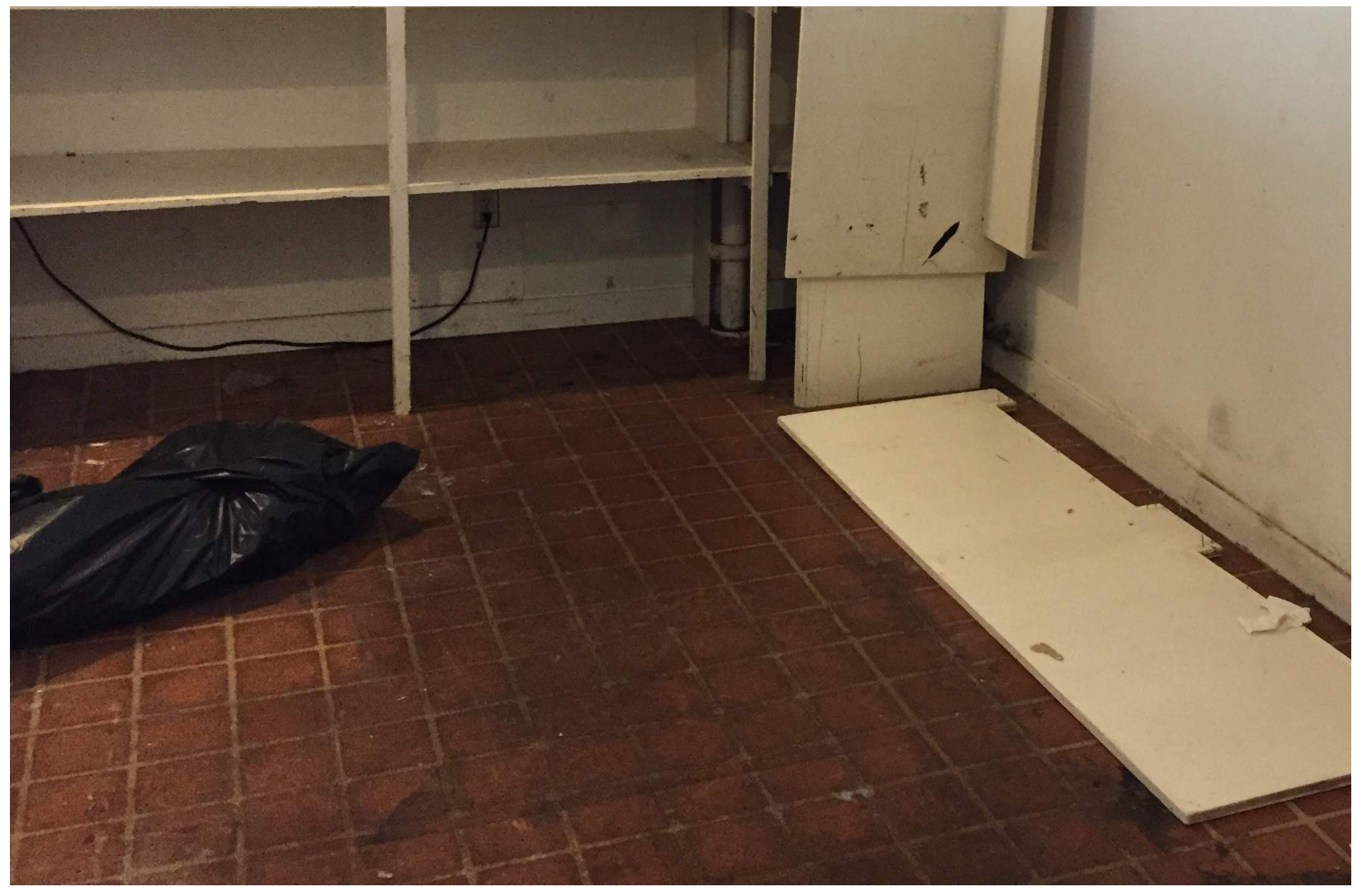


Applying The Brew Floors Products

BACKGROUND ON THE PROJECT

It was quite a journey. It was slab covered in laminate sheeting. We pulled some up and had it tested for asbestos, which it was. We got a team in here to pull it up and mitigate the asbestos, which left us with bare slab. We then rented a concrete saw, cut the slab, removed the old concrete, dug out the ground, had the plumbers install the sink and trench drains, then back filled the dirt and concrete. We then leveled the floor and waited for it all to cure. Then we put on our epoxy, which we had enough to do two coats of both layers. We're very happy with how it turned out. We documented the whole process and have pictures of every step, let me know if you're interested in them, I'd be happy to share them.

THE BREW SPACE BEFORE



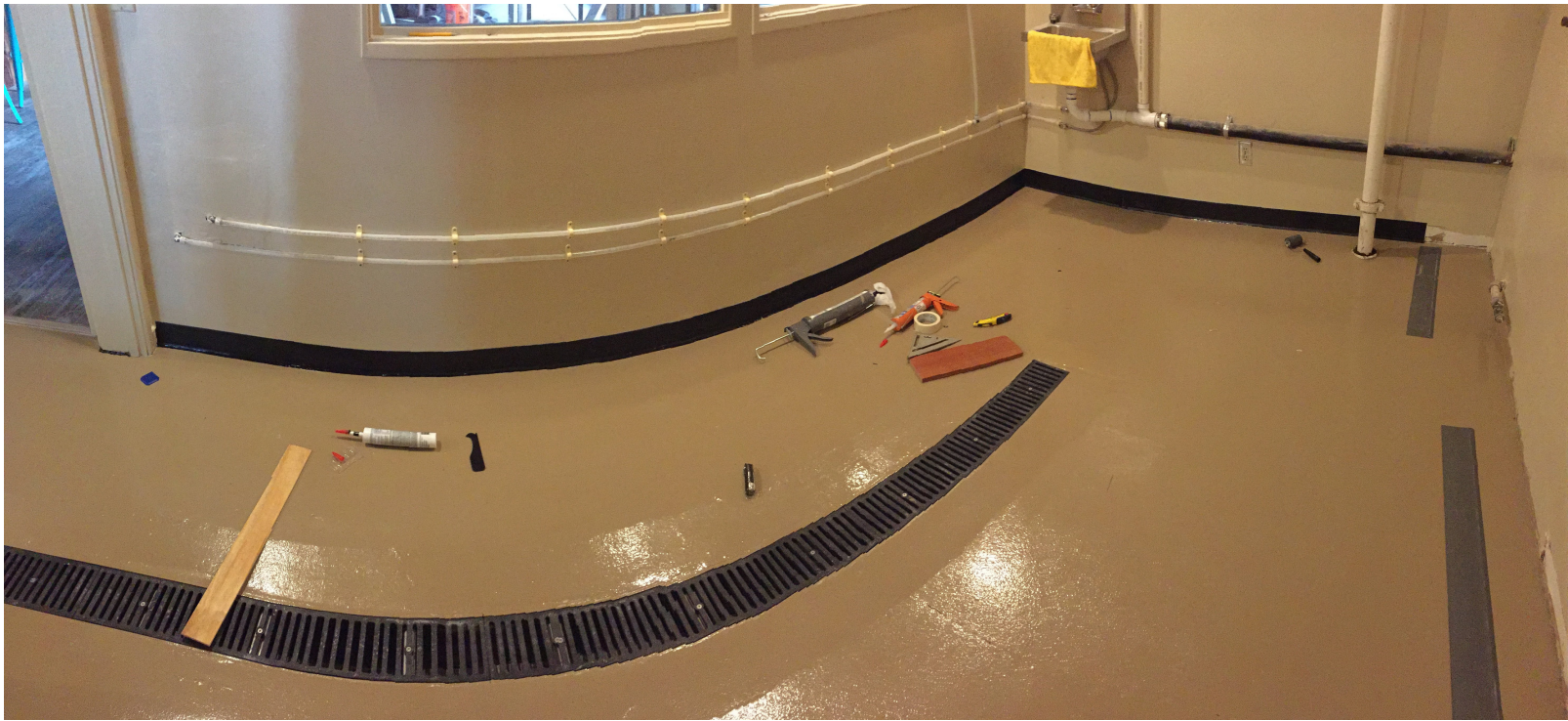
CUTTING SLOTS FOR THE DRAINS



FLOOR PREP



APPLICATION



FINAL PRODUCT

